

**Bontrager
Ion Comp R and Flare R City**

trekbikes.com

PN 598114-1

About this product

The **Ion Comp R** provides enough power to light up any road or trail, and the **Flare R City** gives you the added safety of a rear daytime running light. Both are USB-rechargeable and feature distinctive day flash visible from up to 1.2 miles (2km) and 0.5 miles (0.9km) away respectively.

⚠ WARNING:

The front light may be hot and could cause a burn or damage material it may contact. Do not activate (turn on) light in enclosed area.

IMPORTANT: Check your local lighting laws. Flashing lights and full brightness may not be allowed in all locations. Ion Comp R and Flare R City do not conform to the German road traffic regulation StVZO.

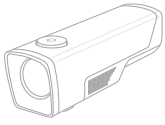



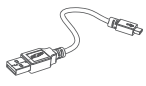
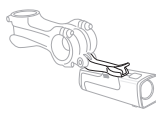



Specifications

- **Battery charging and operating temperature:** 32°F to 104°F (0°C to 40°C)
Reduced performance when operating below freezing.
- **Ion Comp R:** 2550mAh, 3.6V, 9.18Wh, 18650 lithium-ion battery.
Weight: 135g (4.8oz) light and mount.
- **Flare R City:** 250mAh, 3.7Vdc, 0.9Wh, 35 lumens.
Weight: 27g (1.0 oz) light and mount.

For more information

If you need help not offered by this manual, talk to your Bontrager retailer or visit bontrager.com.

Parts list

| | Ion Comp R (included) | Accessories (purchase separately) |
|-----------------------|--|--|
| Light |  | Helmet mount Blendr mount system: Blaze – Model 25359 Charge – Model 25368 Circuit – Model 21764 Rally – Model 21797  Circuit (shown) |
| Mount | Quick-connect plus mount Designed to work with 22.2, 25, 31.8, and 35mm handlebars. PN W593503  | Blendr universal mount Model W574066  |
| Charging Cable | Micro USB Cable PN W559136 (4-wire)  | Blendr ion road mount Model 529592  |
| | Flare R City (included) | (purchase separately) |
| Light |  | Bontrager seat pack clip PN W528503 (plastic), PN 424905 (steel). Clip-style light mount attaches to seat bags, backpacks, belts, and pockets.  |
| Mount | Quick-connect bracket for tail light PN W533846  | |

⚠ WARNING

A bicycle without correct lights and reflectors might be difficult for other people to see, and you might not be able to see them. If you cannot see, or other people cannot see you, you could have an accident. Make sure your lights are set up, operating correctly, and that batteries are charged.

Basic operation Ion Comp R (see Table 1)

- To turn on, double click the power button.
- To turn off, press and hold the power button for 1 second.
- To change modes, single-click the power button to advance through the mode list: (High > Medium > Low > Night Flash > Day Flash).

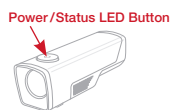



Table 1
Modes, run times, and battery life

| Power Button/Status LED | Mode | Max Output (lumens) | Run time (hours) | Power Button/Status LED Color | Battery Life, % |
|---|-------------|---------------------|------------------|-------------------------------|-----------------|
|  | High | 700 | 1.5 | Green Steady | 25% – 100% |
| | Medium | 500 | 3 | | |
| | Low | 300 | 6 | Red Steady | 5% – 25% |
| | Night Flash | 200 | 9 | Red Flashing | Less than 5% |
| | Day Flash | 300 | 19 | | |

Enable/Disable Trail Configuration

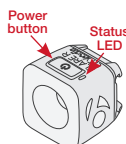
- You can disable the flash modes and enable steady modes while riding in the dark.
- To enable trail configuration, press and hold the power button for 8 seconds. The light will turn off and the main LED will flash once. In this setting a single click will advance the LED through the mode list: High > Medium > Low.
 - To disable, repeat the process.

Reset

- To reset the light to factory default settings:
- Press and hold the power button for 15 seconds. The main LED will flash once at 8 seconds and again at 15 seconds.
 - Release the button after the second flash.

Basic operation Flare R City (see Table 2)

- To power on, press the power button. The light will be in the output mode last used.
- To power off, press and hold the power button until the light turns off.



Auto brightness

The lights automatically adjust their brightness for maximum visibility and battery conservation. The Flare R City gets brighter as ambient light increases (day), and dimmer as ambient light decreases (night).

NOTE: When auto brightness is enabled, Flare R City modes are auto flash, or auto steady.

To disable or enable auto brightness, press and hold the power button 8 seconds. The main LED will flash once.

NOTE: When auto brightness is enabled, the Flare R City modes are auto flash, or auto steady.

Table 2

Flare R City mode change

Quick-press the power button. Each press moves to the next mode.

| Mode* | Lumen Output (peak) | Runtime (hours) | Auto Brightness | |
|--------------------|---------------------|-----------------|-----------------|-----|
| Auto flash | Day | 35 | 8 | Yes |
| | Night | 35 | 16 | Yes |
| Auto steady | Day | 20 | 3 | Yes |
| | Night | 2 | 20 | Yes |

*With auto brightness enabled.

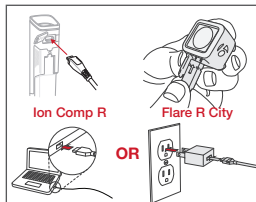
Battery charging and care (see Table 3)

Both the Ion Comp R and Flare R City were charged in the packaging, but we recommend that you charge them before first use.

To charge the battery

IMPORTANT: For best results, charge at room temperature in a dry place. Use a certified CE or UL approved USB charger rated for 500 mA or greater. Avoid extreme conditions including wet, cold, or extremely hot.

1. Open the USB port cover.
2. Plug the Micro charger cable into the USB port on the light.
3. Plug the cable into a computer or wall adapter.
4. When the charge is complete, unplug the Micro charger cable and close the USB port cover.



IMPORTANT: Ensure the USB cover is latched before riding in rain or in wet conditions. If the USB cover is not closed, damage to the light may occur.

Table 3

Ion Comp R battery charging and care

| Power Button/Status LED Color | Charge, % | Charge Duration (hours) |
|-------------------------------|-----------|-------------------------|
| Red flash | 0% – 75% | 6.5 |
| Green flash | 75% – 99% | |
| Green steady ¹ | 100% | |

1. When fully charged, status LED remains steady for 1 minute then turns off.
2. When plugged in after the battery is completely discharged, it may take a minute for the LED indicator to turn on indicating a charge is occurring.

Flare R City battery status feature

The status LED tells the percent of battery charge that remains.

| Power Button/Status LED Color | Charge, % | Charge Duration (hours) |
|-------------------------------|--------------|-------------------------|
| Red steady | 5% – 25% | 1.5 |
| Red flashing | Less than 5% | |

Low battery feature Ion Comp R

When the battery charge drops below 5% the light automatically adjusts the output brightness to 25 lumens. This extends the light output for an additional 10-20 minutes.

Low battery feature Flare R City

The light automatically changes to low battery flash mode when the battery supply goes below 5%. This extends the light output for an additional hour.

Caring for the battery

- Store the light at room temperature in a dry place. Avoid moisture, or extreme hot or cold.
- Store the light in the charged condition. Avoid 'deep discharge'. Battery life will decrease if the battery is stored in a fully discharged condition.
- Over time, the run time of the battery will diminish. Expect about 500 full charges, depending on care. After a full life, the battery will continue to charge but with a lower run time. When the run time is unsatisfactory, do not open the case of the light or incinerate; please recycle.

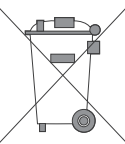
Traveling with the battery

When traveling by air, place the light in your carry-on because it uses a li-ion battery.

Recycling

Please recycle the light with battery. In the US, you can find out where to do this at www.call2recycle.org

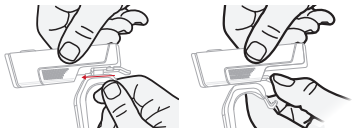
This symbol on the product(s) and / or accompanying documents means that used electrical and electronic products should not be mixed with general household waste. For proper treatment, recovery and recycling, outside the US, please take this product(s) to designated collection points. Alternatively, in some countries you may be able to return your products to your local retailer upon purchase of an equivalent new product. Disposing of this product correctly will help save valuable resources and prevent any potential negative effects on human health and the environment, which could otherwise arise from inappropriate waste handling. Please contact your local authority for further details of your nearest designated collection point. Penalties may be applicable for incorrect disposal of this waste, in accordance with your national legislation.



Light installation

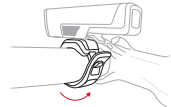
Ion Comp R installation

1. Slide the light onto the quick-connect plus mount until it locks in place.



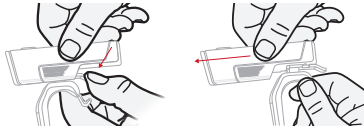
2. Stretch the mount strap around the handlebar and connect the hook in the appropriate slot.

When correctly installed, the light should be parallel to the ground.



Removal

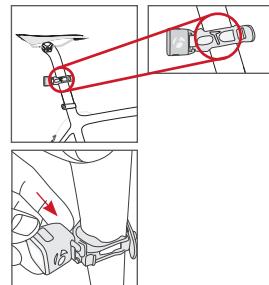
1. Press down on the mount release tab.
2. Slide the light forward to remove.



Flare R City installation

1. Install the quick-connect bracket on the seatpost with the lever to the drive side of the bike. When installed properly, the lens will be perpendicular to the ground and the saddle icon will point the same direction as the saddle on the bike.

2. Stretch the strap around the seatpost and connect to the hook.
3. Slide the light onto the bracket.



Trek Bicycle Corporation contact information:

North America

Trek Bicycle Corporation
801 West Madison Street
Waterloo, WI 53594 USA
Tel: 1-800-585-8735

Europe

Bikeurope BV
Ceintuurbaan 2-20C
3847 LG Harderwijk
The Netherlands
Tel: +31 (0)88 4500699

Australia

Trek Bicycle Corp. Au.
8 Townsville Street
(Level One)
Fyshwick (ACT)
2609 AU
Tel: +61 (02) 61 732 400

Statements of Regulatory Compliance

FCC Compliance

Ion Comp R & Flare R City

These devices comply with part 15 of the FCC Rules. Operation is subject to the following conditions: (1) these devices may not cause harmful interference, and (2) these devices must accept any interference received, including interference that may cause undesired operation.

NOTE: This equipment has been tested and found to comply with the limits for a Class B digital device, pursuant to Part 15 of the FCC Rules. These limits are designed to provide reasonable protection against harmful interference in a residential installation. This equipment generates uses and can radiate radio frequency energy and, if not installed and used in accordance with the instructions, may cause harmful interference to radio communications. However, there is no guarantee that interference will not occur in a particular installation.

These products may cause interference to radio equipment and should not be installed near maritime safety communications equipment or other critical navigation or communication equipment operating between 0.45-30 MHz.

If this equipment does cause harmful interference to radio or television reception, which can be determined by turning the equipment off and on, the user is encouraged to try to correct the interference by one or more of the following measures:

- Reorient or relocate the receiving antenna.
- Increase the separation between the equipment and receiver.
- Connect the equipment into an outlet on a circuit different from that to which the receiver is connected.
- Consult the dealer or experienced radio / TV technician for help.

NOTES: TREK BICYCLE CORPORATION IS NOT RESPONSIBLE FOR ANY RADIO OR TV INTERFERENCE CAUSED BY UNAUTHORIZED MODIFICATIONS TO THIS EQUIPMENT. ANY CHANGES OR MODIFICATIONS NOT EXPRESSLY APPROVED BY TREK BICYCLE CORPORATION OF THIS DEVICE COULD VOID THE USER'S AUTHORITY TO OPERATE THE DEVICE.

European Union Compliance

Trek Bicycle Corporation and Bontrager hereby declare that the lighting device(s) identified as 'Ion Comp R' and 'Flare R City' are in compliance with the following European Directives:

Ion Comp R

- EMC Directive 2014/30/EU
- Low Voltage Directive 2014/35/EU
- RoHS Directive 2011/65/EU
- RoHS Directive 2015/863/EU

Flare R City

- EMC Directive 2014/30/EU
- Low Voltage Directive 2014/35/EU
- RoHS Directive 2011/65/EU
- RoHS Directive 2015/863/EU

The full text of the EU declaration of conformity is available from your dealer, or at the following internet address: <http://www.trekbikes.com/support>

The Ion Comp R and the Flare R City do not conform to the German STVZO regulations.

Industry Canada Compliance

CAN ICES-3(B)/NMB-3(B)

These devices comply with Industry Canada license-exempt RSS standard(s).

Operation is subject to the following two conditions: (1) these devices may not cause interference, and (2) these devices must accept any interference, including interference that may cause undesired operation of the device.

Leprésent appareil est conforme aux CNR d'Industrie Canada applicable aux appareils radio.

Exempts de licence. L'exploitation est autorisée aux deux conditions suivantes:

(1) l'appareil ne doit pas produire de brouillage, et (2) l'utilisateur de l'appareil doit accepter tout brouillage radioélectrique subi, même si le brouillage est susceptible d'en compromettre le fonctionnement.

The Ion Comp R and the Flare R City lighting equipment comply with FCC and IC radiation exposure limits set forth for an uncontrolled environment. Status of the listing in the Industry Canada's REL (Radio Equipment List) can be found at the following web address:

<http://www.ic.gc.ca/app/sitt/reitel/srch/nwRdSrch.do?lang=eng>

Additional Canadian information on RF exposure also can be found at the following web address:

<http://www.ic.gc.ca/eic/site/smt-gst.nsf/eng/sf08792.html>

Cet appareil est conforme aux limites d'exposition à la fréquence radio (FR) d'IC et de FCC. La puissance de sortie émise par l'appareil de sans fil Ion Pro RT est inférieure à la limite d'exposition aux fréquences radio d'Industrie Canada (IC). Cet appareil est en contact direct avec l'utilisateur dans des conditions normales d'utilisation. L'émetteur ne doit pas être co-implémenté ou utilisé conjointement avec une autre antenne ou un autre émetteur. Ce périphérique est homologué pour l'utilisation au Canada. Pour consulter l'entrée correspondant à l'appareil dans la liste d'équipement radio (REL - Radio Equipment List)d'Industrie Canada rendez-vous sur: <http://www.ic.gc.ca/app/sitt/reitel/srch/nwRdSrch.do?lang=fra>

Pour des informations supplémentaires concernant l'exposition aux RF au Canada rendezvous sur:

<http://www.ic.gc.ca/eic/site/smt-gst.nsf/fra/sf08792.html>

If you wish to see these manuals in another language, please visit www.trekbikes.com/support and look for the Ion Comp R & Flare R City manual on the Manuals and user guides page.

DE Wenn Sie dieses Handbuch in einer anderen Sprache lesen möchten, besuchen Sie bitte www.trekbikes.com/support und suchen Sie auf der Seite Handbücher und Benutzerhandbücher nach dem Ion Comp R-Handbuch.

FR Si vous souhaitez voir ce manuel dans une autre langue, rendez-vous sur le site www.trekbikes.com/support et recherchez le manuel Ion Comp R sur la page Manuels et guides de l'utilisateur.

ES Si desea ver este manual en otro idioma, visite www.trekbikes.com/support y busque el manual de Ion Comp R en la página Manuales y guías del usuario.

PL Jeśli chcesz zobaczyć tę instrukcję w innym języku, odwiedź stronę www.trekbikes.com/support i poszukaj instrukcji Ion Comp R na stronie Podręczniki i instrukcje obsługi.