

TREK

Helmet Fit System Replacement Instructions

ENGLISH

Click below to select your fit system.



[Quickset II](#)



[Headmaster II](#)



[BOA](#)



[WaveCel BOA](#)



[Velocis MIPS BOA](#)



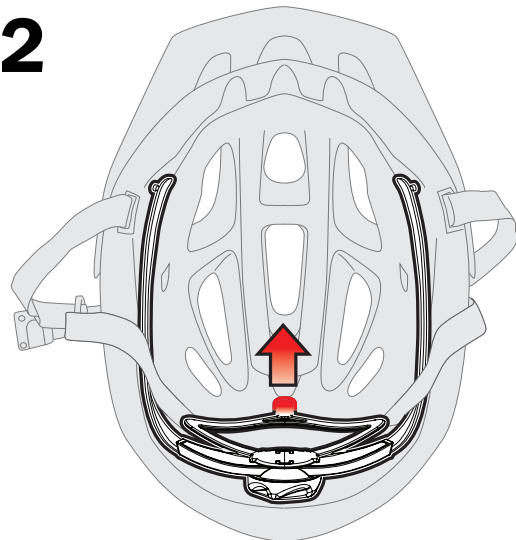
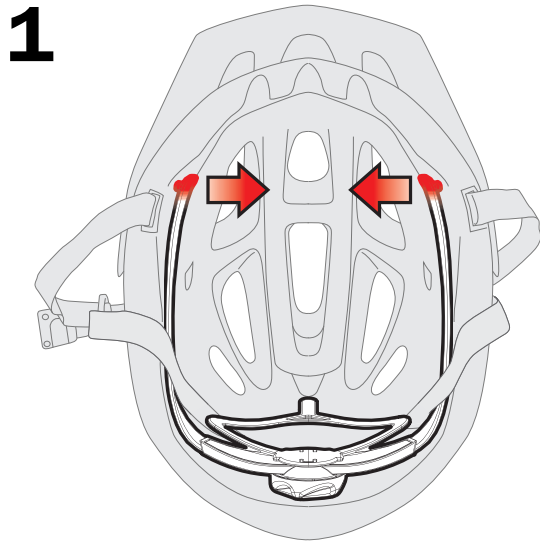
[Velocis MIPS BOA](#)

Quickset II System

Remove the old fit system

NOTICE: Detach the fit system one piece at a time. Grasp each piece as close as possible to the attachment point as shown. Grasping farther from the attachment point could break the system and make it difficult to remove.

Use one hand to firmly hold the helmet. Use the other hand to grasp each piece of the fit system as close as possible to where it attaches to the helmet (shown below in red). Pull it toward the center of the helmet to detach it.

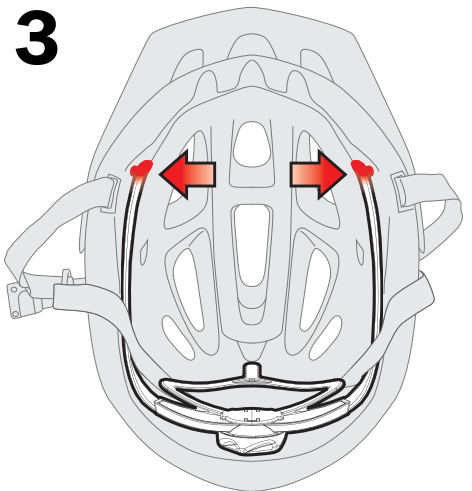
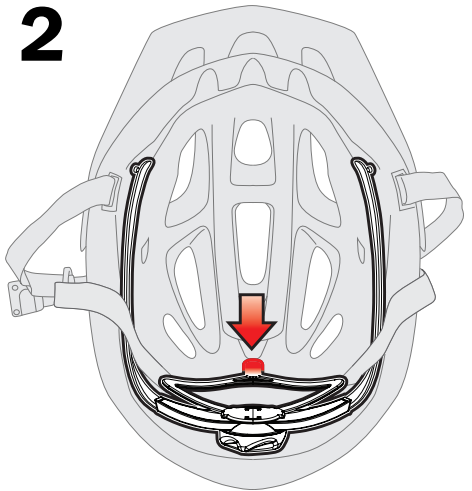
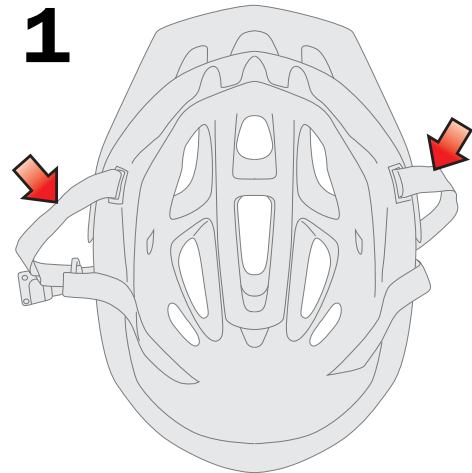


Install the new fit system

⚠ WARNING

Proper helmet fit

For proper fit, the fit system must be woven through the straps as shown below.



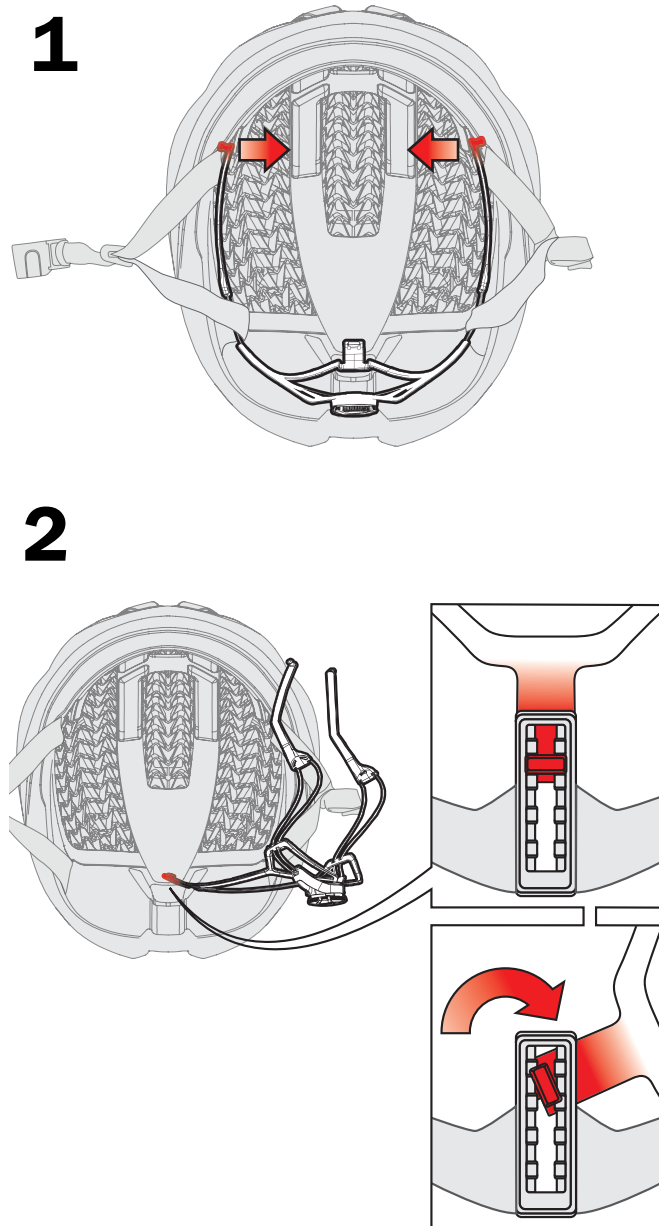
BOA, WaveCel BOA and Headmaster II

Note: The illustrations below may differ slightly from your fit system, but the steps are the same.

Remove the old fit system

NOTICE: Detach the fit system one piece at a time. Grasp each piece as close as possible to the attachment point as shown. Grasping farther from the attachment point could break the system and make it difficult to remove.

Use one hand to firmly hold the helmet. Use the other hand to grasp each piece of the fit system as close as possible to where it attaches to the helmet (shown below in red). Pull it toward the center of the helmet to detach it.

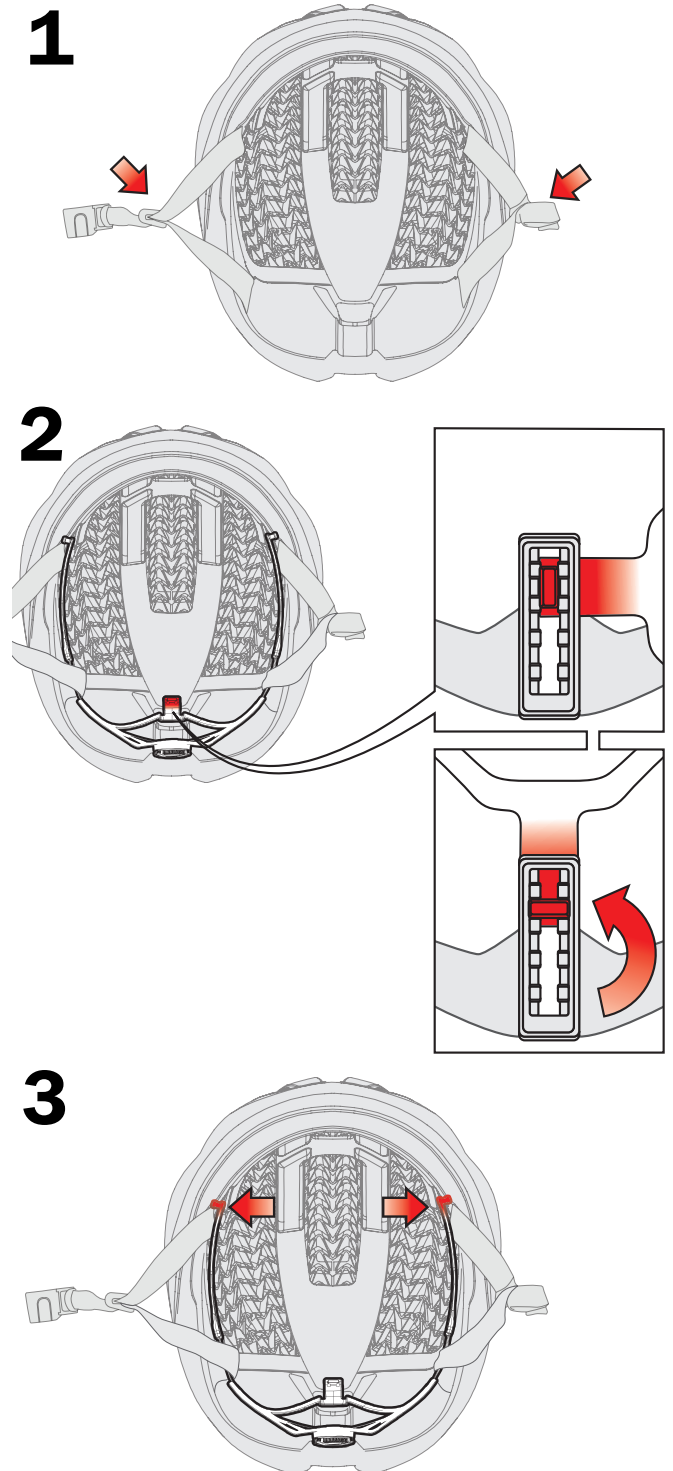


Install the new fit system

! WARNING

Proper helmet fit

For proper fit, the fit system must be woven through the straps as shown below.

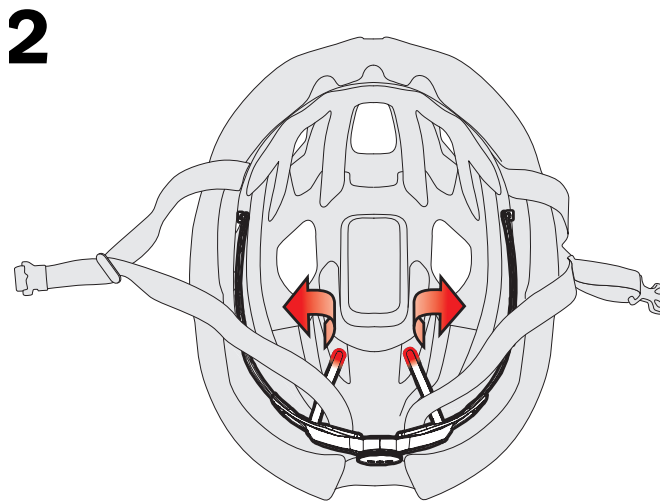
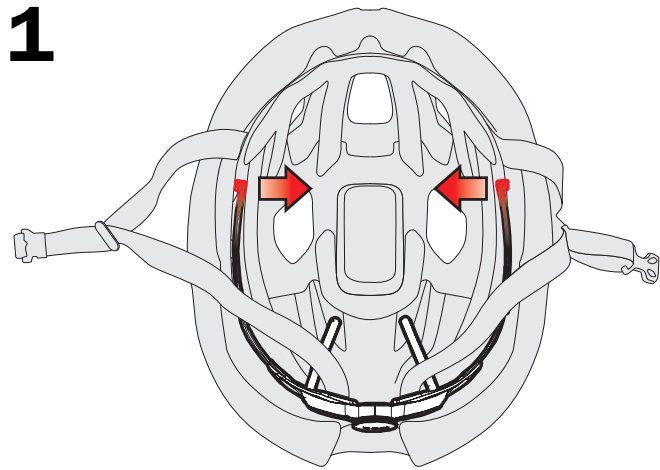


Velocis MIPS BOA System

Remove the old fit system

NOTICE: Detach the fit system one piece at a time. Grasp each piece as close as possible to the attachment point as shown. Grasping farther from the attachment point could break the system and make it difficult to remove.

Use one hand to firmly hold the helmet. Use the other hand to grasp each piece of the fit system as close as possible to where it attaches to the helmet (shown below in red). Pull it toward the center of the helmet to detach it.

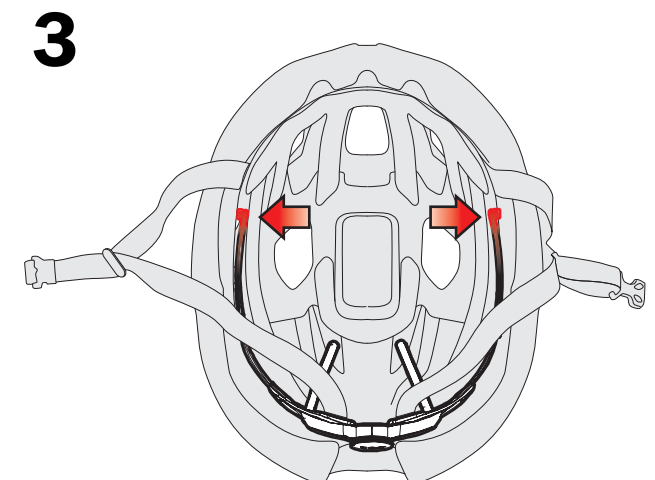
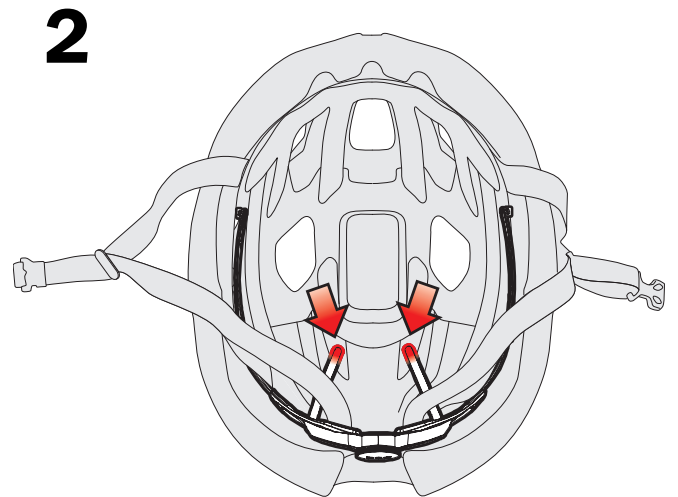
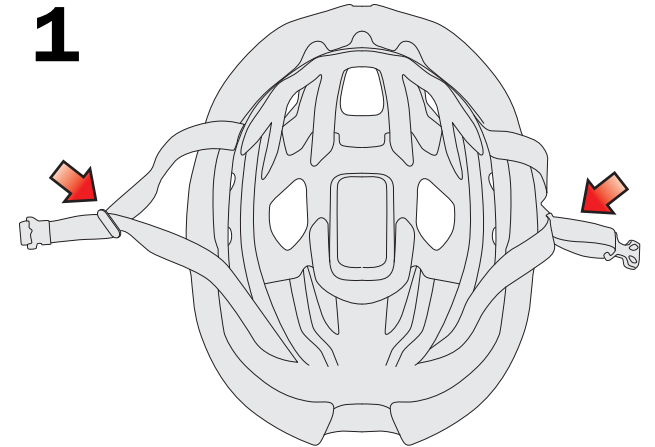


Install the new fit system

⚠ WARNING

Proper helmet fit

For proper fit, the fit system must be woven through the straps as shown below.



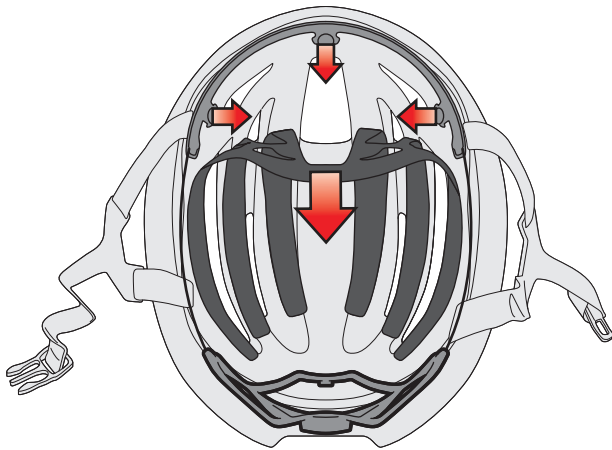
Velocis MIPS BOA System

Remove the old fit system

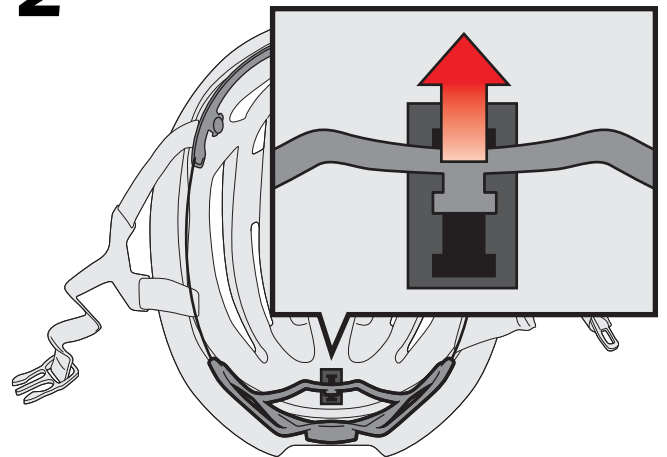
NOTICE: Detach the fit system one piece at a time. Grasp each piece as close as possible to the attachment point as shown. Grasping farther from the attachment point could break the system and make it difficult to remove.

Use one hand to firmly hold the helmet. Use the other hand to grasp each piece of the fit system as close as possible to where it attaches to the helmet (shown below in red). Pull it toward the center of the helmet to detach it.

1



2



Replace the fit system

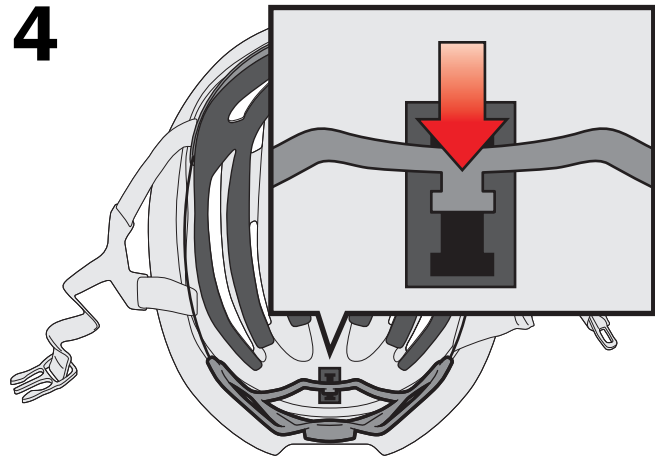
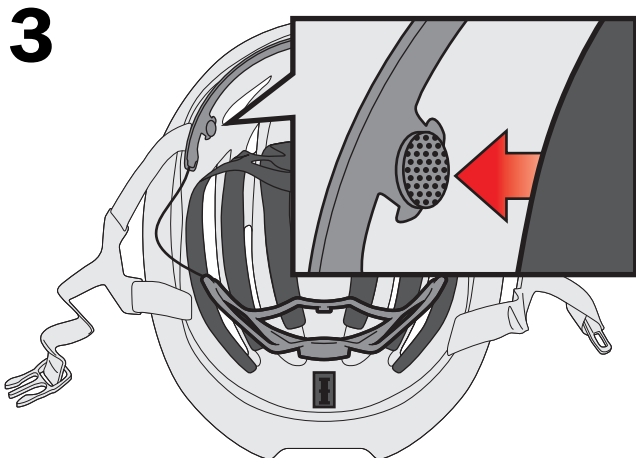
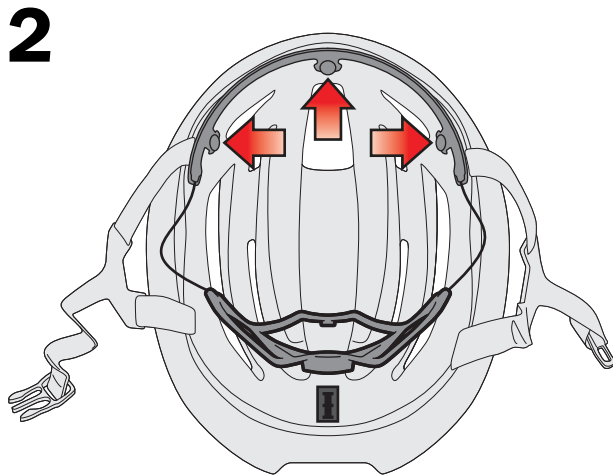
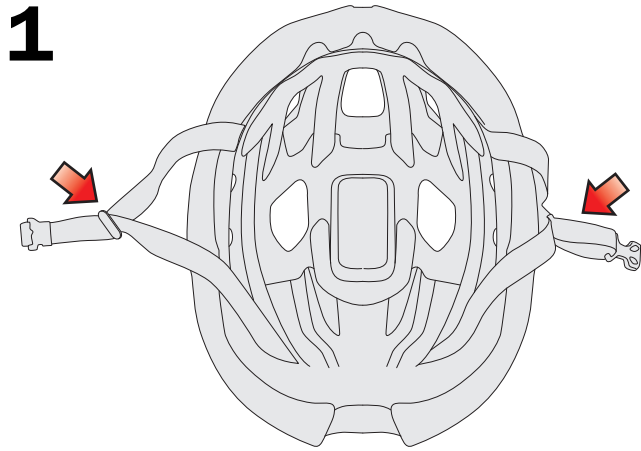
[Install the new fit system section on page 6.](#)

Install the new fit system

! WARNING

Proper helmet fit

For proper fit, the fit system must be woven through the straps as shown below.



Optional: Reposition the band tensioner

Reposition the band tensioner to raise or lower the head-band for a comfortable, customized fit.

